

# Jigsaw

## Glass and Mirror Brochure 2021



Better Heating for a Better World





Cover: 1000w Sirius Round Edge Mirror in Situ

Above: Sirius Square Edge 1000w Mirror in Situ

## WHO ARE JIGSAW?

Jigsaw is a family owned business. We are a team of professionals who care about providing an excellent UK manufactured product with a first class finish.

Our goal is to help modernise the way every building is heated. By using Infrared it is possible to save money on energy bills, reduce CO<sub>2</sub> and add premium products to domestic and commercial properties. As part of this we offer the full service from the design, manufacturing and delivery of our products.

At Jigsaw Solutions, we believe that the future of heating any building efficiently will be with infrared. Our products are highly efficient, fully controllable and market leading in their design and production. We are sure that there will be a Jigsaw product to suit your environment.

The demand of your heating could also be met by combining solar power or other renewable energy sources.

One of our main goals is to reduce the amount of pollution and wasted energy produced by our homes. We are working towards zero CO<sub>2</sub>, zero waste, high efficiency heating. As part of our commitment to this we use products that are the most efficient on the market, have long working lives and ones that can also be recycled.

**Jigsaw provide the solution piece by piece**





# WHAT IS INFRARED?

Infrared is radiant heat, it feels like stepping out of the shade and into the sun.

## What is Infrared?

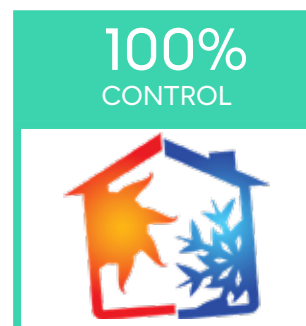
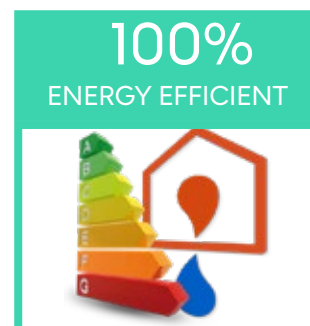
Infrared heats objects directly when it touches them. That object will then either absorb heat or reflect it to another object within the space. Whereas, convection heat is lost through the materials of the building.

Infrared heat works in exactly the same way as our sun does, whilst this sounds very Science Fiction it is perfectly safe and in fact it is often used to keep premature babies warm in hospital.

## Benefits of Infrared

As well as being an efficient way to heat your home, our heaters also have added health benefits:

- They help ease allergens, mould and condensation in the space.
- Infrared does not circulate air as much as convection. Therefore, it does not circulate as much dust and pollen.
- This helps sufferers of Hay Fever, Asthma and other respiratory issues. Livestrong, 2018



## What does it feel like?

- It can help our bodies lose weight, lower high blood pressure and relieve pain. Relaxedwellbeing.com, 2018
- Infrared heating leads to improved circulation and allows the immune system cells and chemicals to converge on the injured areas to facilitate the healing process. Parentgiving.com, 2017
- Infrared light is the reason why we feel warm when the sun is shining in the middle of a wintry day. Thegreenage.co.uk, 2018

# BENEFITS OF INFRARED

Infrared heating is super efficient and cuts down your energy use, you can be sure you're opting for an eco-friendly heating source. The Greenage, 2017

## What is infrared heating?

Infrared is a modern, innovative way to heat your property. It looks great, takes up very little space, can be wall or ceiling mounted and comes in a wide range of shapes and sizes to suit your room.

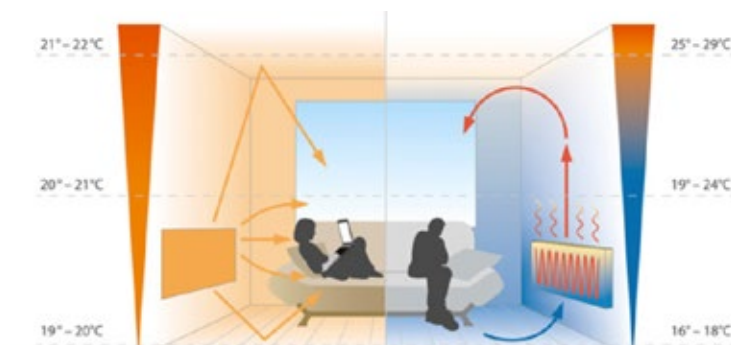
The process is 100% energy efficient, delivering significant energy and cost saving benefits.

## Comparison to Other Forms of Heating

- Up to 25% reduction on gas central heating systems
- Up to 40% reduction on oil central heating systems
- Up to 50% reduction on electrical storage heating.
- 100% Control as each room is controlled independently.



## Energy Savings



Infrared heats the space and all the objects within it which is 30% more efficient than standard plumbing and up to 50% more than storage heaters.

Convection heaters (Radiators) heat the air, which is inefficient and causes pockets of cold air and drafts. Meaning that all the warm air can be lost.



## The Future is Energy Efficient

At Jigsaw we are planning for the future and we believe that it will be a efficient one. Due to this, we have high requirements for our infrared heaters.

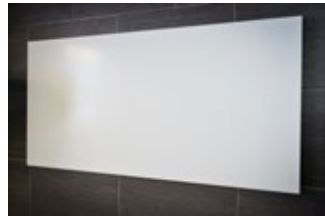
We have ensured that our heaters are optimised to work with solar panels and other renewable energy systems.

## Where does the cost and energy saving come from?

**1/3 more energy** required to heat a room using convection heat.

**Infrared heaters can provide the same comfort levels at lower temperatures** than convection heat.

Convection heaters **take 6% more energy** to raise the temperature by each 1C.



**Convection heat** is subject to **higher heat loss** from piping and draughts

IR is directional and unaffected by the medium it travels through and **they don't lose heat as they travel through the air.** Newair.com, 2017

**Convection heat** is a far less efficient source of heat transfer than Infrared heating.

## Government Regulation Changes

- 13% of the UK's carbon footprint comes from heating.
- The Future Homes Standard is aimed at delivering excellent energy standards into all new homes from 2025
- A new coding 'SAP10.2 – Part L' - Future Homes standard for conservation and power for new dwellings.
- This coding will show electrical heating rated to a score on parity with Gas.



## Running Costs of Infrared

- Comparing infrared to other forms of electric heating, the savings could be over 50%.  
Due to the effective way that infrared heats a person or object.
- The heat from one of our heaters is immediate.
- Our heaters are virtually maintenance free.
- There are no moving parts, no gas boilers to maintain or to replace.
- Controls allow easy, set it to the desired temperature with your phone or thermostat.
- This can be done in each room rather than an inefficient centrally controlled system.



Sirius Series in Situ

## Benefits Over Gas Central Heating

- Reduced installation cost
- No maintenance or service costs
- 100% recyclable
- From 2025 all new home will be banned from installing gas
- Reduced costs and easy to install compared to gas
- Converts all energy into heat
- Heating can be monitored and controlled by individual thermostats.

## Domestic Energy comparisons

Convection Heater (2.5kW)	35p per hour
Fan Heater (2kW)	28p per hour
Oil Filled (2kW)	28p per hour
Storage Heater (4kW) Peak	56p per hour
Jigsaw 1000w Panel Heater	14p per hour

\*Based on the price of electricity being 14p per hour



Sirius Bespoke Heaters in Situ



\*More information can be found on our website:  
<https://www.jigsawinfrared.com/what-is-infrared-heating/>



# JIGSAW Sirius Square Edge

Our all new Glass Panel Series Infrared Heaters are a stylish slim design. The panels use a high grade UK made infrared heat mat which is sandwiched between two premium sheets of toughened glass with a square edge finish.

The radiant panels are as standard produced in white and Mirror. They can be to a range of colours.

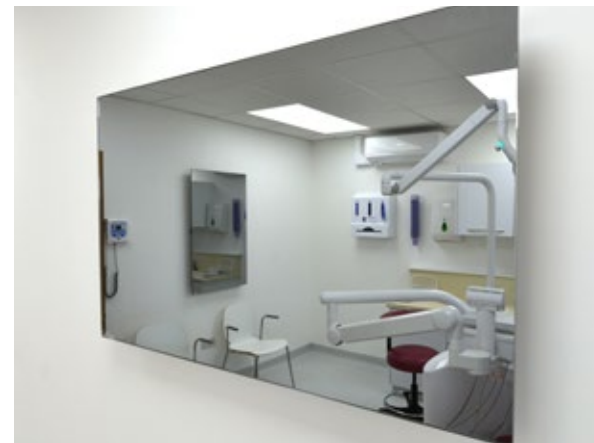
The Infrared Panel Heaters are easy to install on the wall with our sliding mounting points. They can be installed in to any space very quickly.



800w White Glass Panel



1000w Sirius Square Edge Mirror in Situ



1500w Sirius Square Edge Mirror in Situ



SUITABLE FOR INDOOR USE

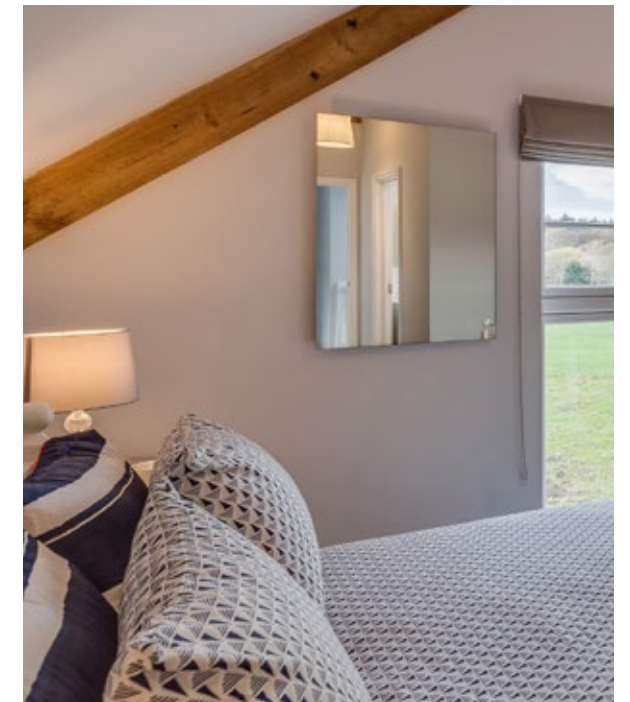
Recommended installation point: Wall  
Dimensions (W x H): **400w** = 600x600mm, **800w** = 500x1000mm, **1000 & 1500w** = 600-1200mm. Depth of glass 10mm (Bracket adds 30mm to overall depth)  
Weight: 7-14kg  
Voltage: 230v

# JIGSAW Sirius Glass Round Edge

The Sirius Round Edge heater is identical to the other Sirius heater with one minor difference. The round edge has a 50mm radius corner giving it a elegant feel.

The heater is designed to reach its operating temperature within a few minutes. Warming the room quickly and efficiently. The heater also looks more pleasing to the eye than a standard heater.

The series wattage ranges from 400w to 1500w. They are capable of warming a wide variety of spaces.



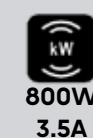
400w Sirius Round Edge Panel in Situ



400w Sirius Bespoke Heater in Situ



1000w Sirius Round Edge Heater in Situ



SUITABLE FOR INDOOR USE

Recommended installation point: Wall  
Dimensions (W x H): **400w** = 600x600mm, **800w** = 500x1000mm, **1000 & 1500w** = 600-1200mm. Depth of glass 10mm (Bracket adds 30mm to overall depth)  
Weight: 7-14kg  
Voltage: 230v

# JIGSAW Pegasi Glass Heater

Due to its shape, the Pegasi series is named after the mythical winged horse. The panels are available in a wide range of colours and mirror.

The panels can be mounted in either horizontal and vertical position. This allows for a variety of installation points throughout the property.

At Jigsaw, we find that most people are not even aware that this is a heater when installed in a home. A great design for hiding your efficient heating.



1500w Pegasi Mirror Panel in Situ



1500w Pegasi Mirror Panel in Situ



1000w Pegasi Mirror Panel in Situ



SUITABLE FOR INDOOR USE

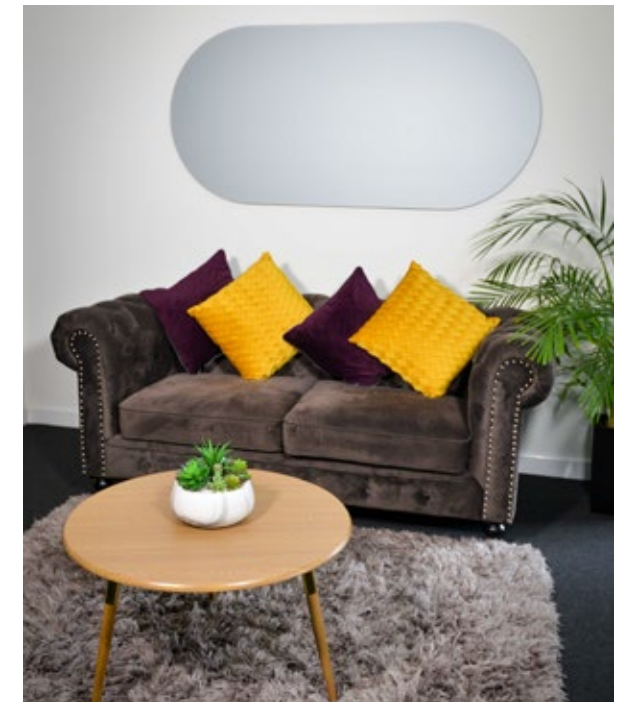
Recommended installation point: Wall  
Dimensions (W x H): **800w** = 535x1065mm, **1000 & 1500w** = 650-1300mm. Depth of glass 10mm (Bracket adds 30mm to overall depth)  
Weight: 11.4 - 17kg  
Voltage: 230v

# JIGSAW Antares Glass Heater

This highly efficient, reliable panel can be wall mounted to free up the wall space where a normal radiator would be place. Installation is simple and can be fixed in landscape or portrait with an easy repositioning of the rear bracket.

Our Glass panels are built to last. The 5 year guarantee and the quality of the UK made workmanship and product surpass any other product on the market.

The panels are available in a range of colours and our specially manufactured toughened mirror glass.



1500w Antares Bespoke Heater in Situ



1000w Antares Mirror in Situ



1500w Antares White Heater in Situ



SUITABLE FOR INDOOR USE

Recommended installation point: Wall  
Dimensions (W x H): **800w** = 500x1300mm, **1000 & 1500w** = 600-1600mm. Depth of glass 10mm (Bracket adds 30mm to overall depth)  
Weight: 8.3kg  
Voltage: 230v



# JIGSAW Atlas Glass Heater

For our Atlas Infrared heaters, only high-quality materials have been used to design and make these top of the range heaters. We find the Atlas heater used mostly in bathrooms.

Extremely well crafted, these panels are beautiful and will add an elegant focal piece to any environment.

Our infrared heaters can be tailored to suit your style and decoration. Whether you would prefer something subtle or if you would like something bespoke that stands out.



400w Atlas Mirror Heater at NSBRC, Swindon



400w Atlas Heater in Situ



400w Atlas Mirror Heater in Situ



**SUITABLE FOR INDOOR USE**

Recommended installation point: Wall & Ceiling  
Dimensions (W x H): 778mm Diameter x 10mm (depth of bracket adds 30mm)  
Weight: 12kg  
Cable Supplied: 1.8m  
Voltage: 230v



# JIGSAW Printed and RAL Designs

Our Glass range of Infrared panels can be printed with bespoke designs - offering opportunities to brighten your home or the office with artwork or company branding. Alternatively, panels can be used to complement existing decor.

You can re-create a unique piece of artwork on your heating panel, a special picture or a lovely landscape, the possibilities are endless.

We can also offer a bespoke service should you wish to commission something extra special.



Heaters Available in some RAL colours & Prints



1000w Printed Heater in Situ



Match the colour to your decor



**SUITABLE FOR INDOOR USE**

Some RAL colours are on offer. Please check to ensure that we can match the colour prior to order.

Printed glass images must be high resolution files. Images submitted will be printed directly to the glass.

**Image Requirements:**  
Customers must confirm that they own the right to the images.  
File Size: 5 to 20 MB  
Resolution: 250dpi or above  
Colour code: RGB or CMYK



## Why Choose Jigsaw?

At Jigsaw we are positive you will be extremely happy with our products. Our manufacturers have a combined experience of 80+ years.

All of our products are manufactured to the highest of standards. The components we have chosen are the best to increase the panel's reliability and performance.

- Experienced staff members with a wealth of knowledge of infrared
- Range of the best products on the market to choose from
- UK manufactured
- Bespoke installations and products
- 5 year warranty\* on our products
- Extremely energy efficient heating systems



High Quality Manufacturing

## Certification

Our heaters are frameless, with simple, elegant lines enhancing the quality. We use a robust aluminium to create a substantial heater which retains a light weight.

The heaters can be either ceiling or wall mounted with our simple and elegant mounting system. Certified in the UK to the following standards:

EN 60335-1:2012 / EN60335-2-30 (Safety of Electrical Appliances)  
EN55014 1 + 2 / EN61003-2 / EN61003-3 (EMC)  
EN62233-2008 (EMF)  
EN60529-1992 + A2 (IP44 rating)  
2011/66/EU RoHS  
CE Certified



Panel Powder Coating

\*5 Year warranty on Premium Aluminium Panels



Bedrooms, Guest Bedrooms, Hotel Rooms, En Suites



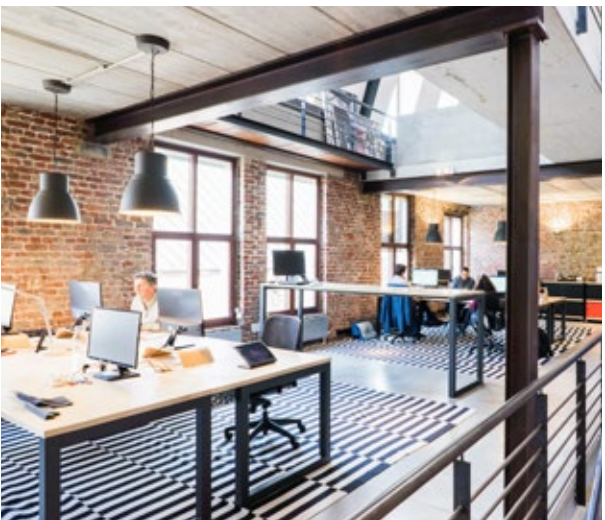
Living Areas, Conservatory, Lounge, Open Plan Areas



Bathrooms, Changing Areas, Hotels, Spas, Waiting Rooms



Kitchen, Dining Areas, Lounges, Bars, Lobbies, Corridors



Office, Communal, Shops, Classrooms, Bars, Retail Spaces



Yoga studios, Gym, Dance Studios, Changing Rooms





1000w Printed in Situ

# Jigsaw

For Further Information Contact:

Email: [info@jigsawinfrared.com](mailto:info@jigsawinfrared.com)

Web: [www.jigsawinfrared.com](http://www.jigsawinfrared.com)

Trade: [www.jigsawinfraredfactory.com](http://www.jigsawinfraredfactory.com)

Phone: 0121 794 2081



Solutions by Jigsaw LTD is a Limited Company registered in England and Wales.  
Head Office: Strategic House | 1 St Kenelm Court | Halesowen | B62 8HD | Company Number 10669703 | VAT 315 3643 21