

BARRIAIR

AIR BARRIER AND VAPOUR CONTROL LAYER

Protect BarriAir with integrated lap and sealing tapes is a high performance and multi-purpose coated non-woven membrane which forms a highly effective air leakage barrier with vapour control qualities.

The yellow semi-translucent material has a grid printed across the whole surface which promotes simple alignment with timber studs or joists. The integrated tapes are located on the outer edges of the membrane following the dotted overlap line. On one side the tape is on the upper surface, on the other side the tape is on the lower surface. This layout ensures that the membrane overlap is jointed and sealed by applying the two layers of adhesive to one another, providing a more effective seal than a traditional overlap tape even when joined without an underlaying substrate.

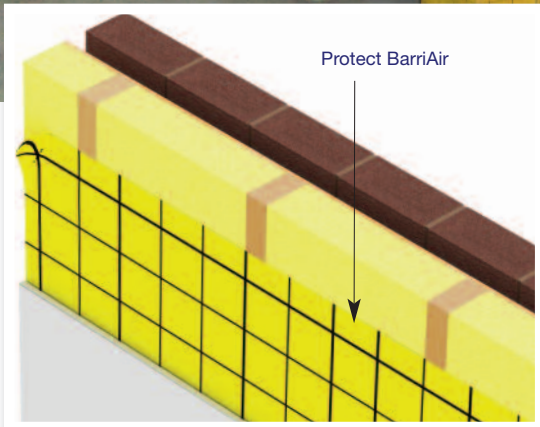
There is an additional benefit in that any mechanical fixings applied through the double layered strips will have reduced air leakage as the adhesive will act as a sealant.

BENEFITS

- Suitable for timber frame, pre-cast concrete and traditional brick and block construction.
- Provides an airtight system when installed with sealed laps.
- Dramatically reduces heat loss through the building fabric.
- Improves the thermal performance of all insulants by reducing convection flows.
- Tough, durable with high tear resistance.
- Provides support to mineral wool and rock fibre when fixed to timber frame studs or rafters.
- Helps to avoid interstitial condensation risk within insulation in accordance with BS 5250.
- Separate Protect sealing tapes also available.
- Ideal for Passivhaus projects.
- Easy to cut and lightweight to handle in 1.5m x 50m rolls.
- 3m wide option available without integrated tape, ideal for factory fitting.



Protect
BarriAir



Specification clause

Air barrier to be Protect BarriAir supplied by Glidevale Protect, 2 Brooklands Road, Sale, Cheshire M33 3SS, T: +44 (0)161 905 5700 F: +44 (0)161 905 2085. Email: info@glidevaleprotect.com. Air barrier to be multi-purpose coated non-woven membrane of twin ply construction, with integrated sealing tapes on opposing edges of the roll (for 1.5m wide product only). Air barrier to provide vapour control qualities offering water vapour resistance of 95MNs/g. Air barrier to be installed with sealed laps and to be fitted into wall/ceiling/floor* in accordance with BS 5250, BS 9250 and manufacturer's instructions. * delete as appropriate

Dimensions

Roll sizes: 1.5m x 50m (with integrated tape),
3.0m x 50m (no integrated tape).
Roll weight: 8.5kg, 15.8kg.

PERFORMANCE		
	MD	CD
Nail tear strength (N) to EN 12310-1 with mods	197	208
Tensile strength (N/50mm) to EN 12311 with mods	193	184
Air permeability at 200Pa	0.0 l/m ² /s	
Water vapour resistance to EN 1931	95 MNs/g	
Weight	100gsm	
MD = machine direction (along roll), CD = cross direction (across roll).		

Installation

Protect BarriAir is installed on the warm side of the structure immediately adjacent to the insulation and can be used on walls and ceilings to significantly reduce air leakage in any construction, helping to meet Building Regulations and airtightness requirements.

Related products

Protect sealing tapes: www.protectmembranes.com/protecttapes

GLIDEVALE PROTECT

2 Brooklands Road, Sale, Cheshire M33 3SS
T: +44 (0)161 905 5700 F: +44 (0)161 905 2085
E: info@glidevaleprotect.com
W: glidevale.com protectmembranes.com

Glidevale Protect maintains a policy of continuous development and reserves the right to amend product specifications without notice.



A division of Building Product Design Ltd. Company Registration No: 3944123



Stockist's stamp

