



SOLUTIONS FOR OFFSITE

FASTER, STRONGER AND SAFER

BUILDING TRUST



SOLUTIONS FOR OFFSITE

An introduction

Delivering construction solutions that not only meet the most demanding specifications of the building industry, but also improve manufacturing **EFFICIENCY AND QUALITY**, is Sika's commitment to offsite manufacturers.

With **OVER 100 YEARS** of experience in the **CONSTRUCTION INDUSTRY**, Sika has a long track record of success as a complete system and problem solution provider on many projects around the world. With extensive technical expertise and solid practical experience on every continent and in all types of climate and environment, Sika is a highly qualified and reliable partner for all of your manufacturing needs.

In addition, Sika has unrivalled experience in many **MANUFACTURING APPLICATIONS**, such as Automotive, Transportation, Marine, Appliances and Renewable Energy.

We go beyond the supply of materials; we can assist with the development, testing, and design, through to supporting the implementation and **PROCESS OPTIMISATION** in your production.

Sika is the **GLOBAL TECHNOLOGY** and market leader in **SPECIALIST CHEMICALS** for building and construction, providing products and complete system solutions for architectural and structural concrete, structural waterproofing, steel corrosion and fire protection, roof waterproofing, structural glazing, flooring and wall finishes, sealing and bonding, damping and reinforcing, plus so much more.

All this, of course, will help you deliver your projects more efficiently, **MEETING THE HIGHEST SPECIFICATION**, and with Sika as your partner, you will be ready to meet the increasing demands of the future.

SOLUTIONS TO YOUR CHALLENGES

SOLUTIONS FROM THE **BASEMENT TO THE ROOF**



AUTOMATION
FOR REDUCTION IN
LABOUR COSTS



ACOUSTIC SOLUTIONS TO AID
NOISE REDUCTION
AND IMPROVE COMFORT



FAST PRODUCTION TIME TO REDUCE
CYCLES AND INCREASE OUTPUTS



FASTER PRODUCTION RESULTING
IN **COST SAVINGS**
FOR THE CUSTOMER



SAFE AND SECURE BUILDINGS
WITH
FIRE PROTECTION
SYSTEMS



HIGH QUALITY PRODUCTS
AND SERVICE TO MEET LOCAL
AND INTERNATIONAL BUILDING
REGULATIONS



EXPERT SPECIFICATION
SUPPORT COMBINING
**INDUSTRY
KNOW-HOW**
WITH CONSTRUCTION
PRODUCTS



IMPROVE **STRUCTURAL
INTEGRITY** AND REDUCE
WEIGHT BY THE USE OF
ADHESIVES



REDUCE MATERIAL HANDLING AND
WASTE FOR A MORE **SUSTAINABLE
MANUFACTURING PROCESS**



DEDICATED **SPECIALIST MMC
DIVISION** OPTIMISING SUPPLY
CHAIN PARTNERSHIP



ONLY **SIKA**
CAN PROVIDE
CUSTOMERS
WITH ALL THIS





EXTERIOR APPLICATIONS

1



Insulation, cavity filling, pipe outlets, pipes, air conditioning

2



3



Peripheral sealing of doors, windows and joinery

4



Non-permanent seals

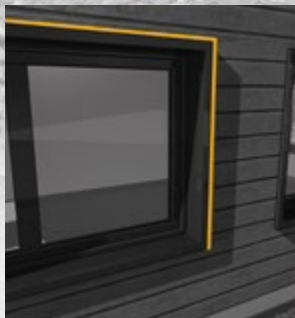


5



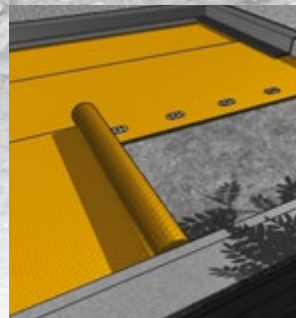
Anchoring adhesives

6



Expansion tapes and membranes around door frames and windows

7



Sealing of roof terraces with membranes and liquid applied solutions

8



Waterproofing roof terraces (green roofs)

EXTERIOR APPLICATIONS

The products listed on pages 6-11 for exterior applications are a selection of the wider range that we offer, totalling approximately 4,000 different products and solutions in the UK

FOR THE ROOF



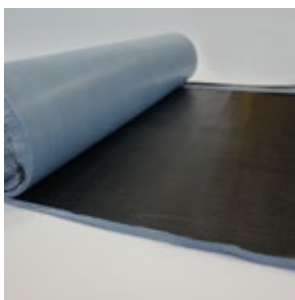
Self-Adhesive Single Ply

Sarnafil® G 410-15 EL SA is a PVC, multi-layer, self-adhesive, lacquered matt finish, weldable sheet membrane with a glass fibre reinforcing inlay. Contains ultraviolet light stabilisers and flame retardants to provide a colour-stable, fast installation, low maintenance and durable membrane. Thickness: 1.5 mm. External fire performance tested according to EN 1187 and classified

according to EN 13501-5: BROOF(t4). Sarnafil membranes carry a BBA Certified life expectancy in excess of 40 years.

For the modular builder, benefits include:

- Factory applied VOC-free self-adhesive
- No primer required
- Hot air welded – no naked flame
- Ease and speed of application
- Larger rolls to reduce wastage and bulk supply available

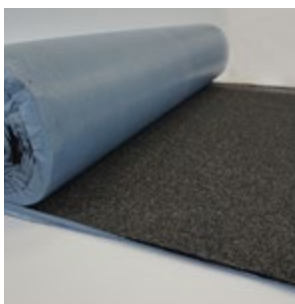


Self-Adhesive Bituminous Felt Underlay

SikaBit® PRO SA-730 is an SBS (styrenebutadiene-styrene) modified, bituminous, self-adhesive, roof waterproofing membrane. It is reinforced with a dimensionally stable non-woven polyester inlay which gives high stability and good mechanical properties. The underside has a removable liner over the adhesive compound for easy application. Upper surface finish: polyethylene film. Thickness: ~3 mm.

For the modular builder, benefits include:

- Factory applied self-adhesive
- Ease and speed of application
- Flame-free in line with Safe2Torch guidelines



Self-Adhesive Bituminous Felt Cap Sheet

SikaBit® PRO SA-940 G is an SBS (styrenebutadiene-styrene) and APAO modified, bituminous, 2-layer, self-adhesive, roof waterproofing membrane. The upper layer is APAO modified which provides good heat resistance. The under layer is SBS modified, increasing the elongation and cold flexibility properties. It is reinforced with a dimensionally stable composite inlay of a glass fibre mat compressed between two

layers of non-woven spunbond polyester fabric. The underside has a removable liner over the adhesive compound for easy application. Upper surface finish: Natural or coloured mineral granules. Thickness: ~4 mm..

For the modular builder, benefits include:

- Factory applied self-adhesive
- Ease and speed of application
- Flame-free in line with Safe2Torch guidelines



S-Vap® 5000 E SA

S-Vap® 5000 E SA is a multi-layered, self-adhesive vapour barrier manufactured from polymer modified bitumen with a glass fibre mat reinforcement and an aluminium foil upper layer.

For the modular builder, benefits include:

- Factory applied self-adhesive
- Cold applied
- Temporary waterproofing
- Can be used to provide watertightness whilst modules are in storage and being transported



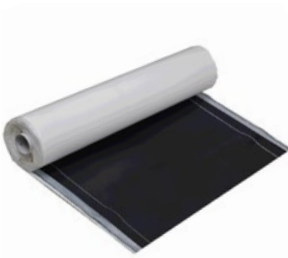
S-Vap® HD SA

S-Vap® HD SA is an elastomeric self-adhesive vapour control layer made of polymer modified bitumen with an aluminium composite and glass combination inlay. The upper surface has a sanded finish.

For the modular builder, benefits include:

- Factory applied self-adhesive
- Cold applied
- Temporary waterproofing
- Can be used to provide watertightness whilst modules are in storage and being transported

FOR DAMP-PROOFING



Sika® BituSeal S-115

Sika® BituSeal S-115 is a post-applied self-adhesive waterproofing sheet membrane. It is based on SBS (styrene-butadiene-styrene) modified bitumen, reinforced with polyester non-woven fabric. It has a silicone-treated release liner on the upper and lower surface.

For the modular builder, benefits include:

- Ease of application
- Easy to detail around areas such as corners, and is robust
- Ideal for the external environment, with no taping or welding needed
- Easily repairable in case of damage in application or transportation
- Comes in large roll sizes if required

FOR THE FAÇADE



SikaMembran®-200 FSA

SikaMembran®-200 FSA is a self-adhered, water-resistant, vapour permeable membrane (Sd value 0.039 m), providing an airtight seal. SikaMembran®-200 FSA has limited contribution to the spread of fire according to EN 13501-1.

For the modular builder, benefits include:

- Reduced wall thicknesses (WUFI calculation required)
- Improved airtightness and possible removal of internal air and vapour control layer (AVCL) (WUFI calculation required)
- Self-adhered product reduces the risk of detachment during transportation to site
- Watertight – B-s1, d0 fire rating when applied to a suitable sheathing board



SikaTack® Panel

SikaTack® Panel is a non-sag, 1-component polyurethane of paste-like consistency for structural joints in ventilated façades and interior wall cladding between the vertically installed substructure and the panel that will be subjected to high dynamic and static stresses. It cures on exposure to atmospheric humidity. SikaTack® Panel is part of the SikaTack® Panel system for the economic, concealed fixing of ventilated façades.

For the modular builder, benefits include:

- Providing uniform tension over the whole façade panel
- Removing any possibility of deflection
- Secretfix (no visible fixings) eradicates rust points and water marks
- The removal and re-application of the panel is possible without causing damage
- Improved aesthetics

EXTERIOR APPLICATIONS cont'd/...

FOR THE FAÇADE cont'd/...



EPDM with Adhesive - SikaMembran® Universal and SikaBond® TF plus N

SikaMembran® Universal is an EPDM sheet membrane with a high vapour diffusion resistance (sd value 62 m) and is thus applicable on both the warm (high vapour pressure) and the cold (low vapour pressure) side of the construction under most climatic conditions. The SikaMembran® system is a high-performance vapour control system comprising of various EPDM sheet membranes providing vapour control layers and waterproof barriers for curtain walls. They are suitable for most climatic conditions in combination with the appropriate adhesive.

SikaBond® TF plus N is a 1-component, PU-based adhesive for the SikaMembran® façade membrane system, which combines high mechanical strength with the necessary elasticity to cope with high movements in façades. SikaBond® TF plus N has excellent adherence to a wide range of substrates.

For the modular builder, benefits include:

- Flexibility and assistance with retaining airtightness



Pointing Mortars (Brick Slips) - Parex Historic Mortar, Historic Mortar AL-X and Historic Mortar KL

Parex Historic Mortars are cement-free mortars suitable for use with dense masonry and brick tiles, where porosity is low and suction is limited.

For the modular builder, benefits include:

- Ease of application
- Flexibility – accommodates slight movement without cracking
- The ability to partially complete application in the factory environment, with outside areas and joints finished onsite



Renders - Parex Maite and Parex 355 AVU Reinforced Mesh

Parex Maite is a highly flexible multi-purpose coloured, breathable and weatherproof mortar in powder form ready to mix with water. Maite is suitable for use as an insulation and brickslip adhesive, for creating a base coat and dash receiver for external wall insulation systems.

For the modular builder, benefits include:

- The ability to partially complete application of the brick slips in the factory environment
- High polymer content gives greater flexibility



Parex Acrylic Render Systems - including Parex Revlane+ Regulateur (Primer) and Parex Revlane+ Ignifuge Taloche Fin/Gros (Topcoats)

Revlane+ Ignifuge Taloche Fin and Gros topcoats are vapour permeable, ready to apply acrylic decorative coatings for external and internal walls. Finished appearance is based upon grain size, Fin 1.0mm/Gros 1.6mm.

For the modular builder, benefits include:

- The ability to partially complete application in the factory environment, with the finishing render applied onsite for continuity and aesthetic appeal
- Modern thin coat render system for speed of application compared to traditional renders
- Choice from up to 200 colours
- Siloxane version also available for improved water shedding in exposed locations

FOR THE GROUTS



Sikalastic®-1K

Sikalastic®-1K is a 1-component, crack-bridging, fibre-reinforced mortar, based on cement modified with special alkali-resistant polymers. Sikalastic®-1K is suitable for application by brush or trowel.

For the modular builder, benefits include:

- Application in the factory environment as part of a panelised system
- No cracking and water resilience when transporting modules to the construction site



Parex CS Grout

Parex CS Grout is a Portland cement-based product giving high strength, good flow and non-shrink properties. Placed grout gives structural support and good vibration resistance.

For the modular builder, benefits include:

- Bonding and supporting during construction, where rebars are incorporated

EXTERIOR APPLICATIONS cont'd/...

FOR THE GROUTS cont'd/...



Parex E33 Epoxy Grout

An epoxy resin high strength flowable grout designed to provide the highest levels of compressive, tensile impact and flexural strength. Suitable for a broad range of applications including base plates, bridge bearings, reciprocal machinery, high impact loads, etc.

The grout is supplied as a three component mix, which is resistant to most chemicals,

petroleum products and seawater. It displays good freeze-thaw stability and achieves a final compressive strength of 85N/mm².

For the modular builder, benefits include:

- High early strength and fast curing - increases speed of application
- High compressive strength for structural elements
- Corrosion and chemical-resistant providing enhanced durability



Sika® AnchorFix®-2+

Sika® AnchorFix®-2+ Solvent and styrene-free, epoxy acrylate-based, 2-component anchoring adhesive for normal/moderate climate conditions.

For the modular builder, benefits include:

- Ease of application, with a chemical anchor alternative to a mechanically fixed anchor
- No additional force of the substrate
- Ideal for using around lifting rings

FOR SEALING AND BONDING A VARIETY OF SUBSTRATES



Sikaflex®-545

Sikaflex®-545 is a very low emission 1-component adhesive based on Sika's Silane Terminated Polymer (STP) technology that cures on exposure to atmospheric humidity. Sikaflex®-545 is a high initial grab adhesive with high load capacity.

For the modular builder, benefits include:

- High initial grab
- Adherence to a wide variety of substrates including plasterboard, steel and timber
- Compensates for stress coming from thermal movement when compared to traditional mechanical fixing methods



Everbuild Tecnic® Silicone-825

Everbuild Tecnic® Silicone 825 is a low modulus, neutral cure, alcoxy, odourless silicone sealant that adheres to a wide range of both porous and non-porous surfaces without the need for priming.

For the modular builder, benefits include:

- Certifications for façade glazing and sanitary applications
- A 35% movement range - ideal for bonding components such as windows, prior to transit to site
- Available in a range of colours



SikaSeal®-106 Construction

SikaSeal®-106 Construction is an elastic construction sealant for connection joints based on Sika's innovative water-borne Hydroflex technology. Its good adhesion to most construction materials makes it especially suitable for a variety of interior and exterior sealing applications.

For the modular builder, benefits include:

- Movement capability +/-25% (ISO 9047) - reduces risk of cracking whilst units are in transportation
- Overpaintable
- Ease of application - very easy to tool off
- Very low VOC emissions
- 1-component ready to use

FOR PASSIVE FIRE PROTECTION



Sikasil®-670 Fire

Sikasil®-670 Fire is a fire-resistant, 1-component, neutral curing, low-modulus elastic silicone joint sealant.

For the modular builder, benefits include:

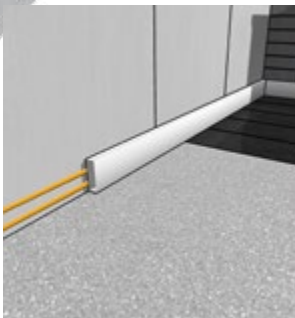
- Fire-resistant - BS476-20 up to 4 hours
- ±25% movement capacity
- Good adhesion to most substrates
- Technical expertise and support with configurations to suit specific requirements
- Please refer to the Passive Fire Protection range in our section for internal applications on page 16

The products listed on pages 6-11 for exterior applications are a selection of the wider range that we offer, totalling approximately 4,000 different products and solutions in the UK.



INTERIOR APPLICATIONS

1



Skirting board bonding

2



Insulation, cavity filling, airtight sealing and passive fire protection

3



Peripheral sealing of doors, windows, joinery

4



Non-permanent seals



5

6

7

8



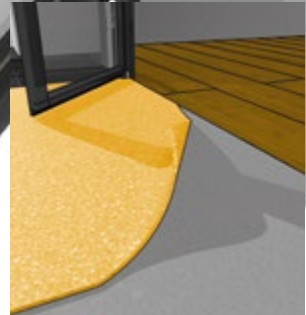
Sandwich panel adhesives



Sanitary sealants



Floor and wall tiling sealants and adhesives



Soft floor and parquet bonding

INTERIOR APPLICATIONS

The products listed on pages 14-18 for interior applications are a selection of the wider range that we offer, totalling approximately 4,000 different products and solutions in the UK

FOR CONCRETE

Self-compacting Concrete

Self-compacting concrete (SCC) is an innovative concrete that does not require vibration for placing and compaction. It is able to flow under its own weight, completely filling formwork and achieving full compaction, even in the presence of congested reinforcement. The hardened concrete is dense, homogeneous and has the same engineering properties and durability as traditional vibrated concrete. SCC has higher fines content than conventional concrete due to higher binder content and a different combined aggregate grading curve. These adjustments, combined with specially adapted superplasticisers, produce unique fluidity and inherent compactability.

Sika ViscoFlow® technology for SCC opens up new potentials beyond conventional concrete applications.

For the modular builder, benefits include:

- Excellent SCC properties
- Significant water reductions
- Easy and simplified placing
- Excellent flow, even around dense reinforcement
- Easy finishing
- High strength
- Consistent slump and flow

In addition to the **Sika ViscoFlow**® for SCC, Sika fibres can also be used to enhance durability and toughness of concrete

Fibres are an ideal ingredient for improving the performance and durability of concrete. They increase energy absorption and fire resistance, whilst reducing shrinkage cracks, fracture formation and crack widths.

The Sika range includes micro, macro and steel fibres.

FOR SEALING AND BONDING A VARIETY OF SUBSTRATES



Sikaflex®-545

Sikaflex®-545 is a very low emission 1-component adhesive based on Sika's Silane Terminated Polymer (STP) technology that cures on exposure to atmospheric humidity. Sikaflex®-545 is a high initial grab adhesive with high load capacity.

For the modular builder, benefits include:

- High initial grab
- Adherence to a wide variety of substrates including plasterboard, steel and timber
- Compensates for stress coming from thermal movement when compared to traditional mechanical fixing methods



Everbuild Tecnic® Silicone-825

Everbuild Tecnic® Silicone 825 is a low modulus, neutral cure, alcoxy, odourless silicone sealant that adheres to a wide range of both porous and non-porous surfaces without the need for priming.

For the modular builder, benefits include:

- Certifications for façade glazing and sanitary applications
- A 35% movement range - ideal for bonding components such as windows, prior to transit to site
- Available in a range of colours



SikaSeal®-106 Construction

SikaSeal®-106 Construction is an elastic construction sealant for connection joints based on Sika's innovative water-borne Hydroflex technology. Its good adhesion to most construction materials makes it especially suitable for a variety of interior and exterior sealing applications.

For the modular builder, benefits include:

- Movement capability +/-25% (ISO 9047) - reduces risk of cracking whilst units are in transportation
- Overpaintable
- Ease of application - very easy to tool off
- Very low VOC emissions
- 1-component ready to use



Everbuild Tecnic® Silicone S50

Everbuild Tecnic® Silicone S50 is a mid-modulus, acetoxycuring silicone sealant that contains a powerful anti-fungal compound to prevent mould and fungal growth in areas of high humidity. It gives improved adhesion and flexibility when compared to standard high modulus sanitary grades.

For the modular builder, benefits include:

- Ease and speed of application with a full cure in 24 hours, dependent upon the bead size and the temperature
- Ideal for use in kitchen and bathroom areas



Sikaflex®-508

Sikaflex®-508 is a low emission 1-component isocyanate-free sealant based on the Sika Silane Terminated Polymer (STP) technology. Sikaflex®-508 meets the most severe environment, health and safety standards and sets a new benchmark in this technology. The product cures on exposure to atmospheric humidity to form a durable elastomer.

For the modular builder, benefits include:

- No compromise of expanded Polystyrene insulation (EPS)

INTERIOR APPLICATIONS cont'd/...

FOR PASSIVE FIRE PROTECTION

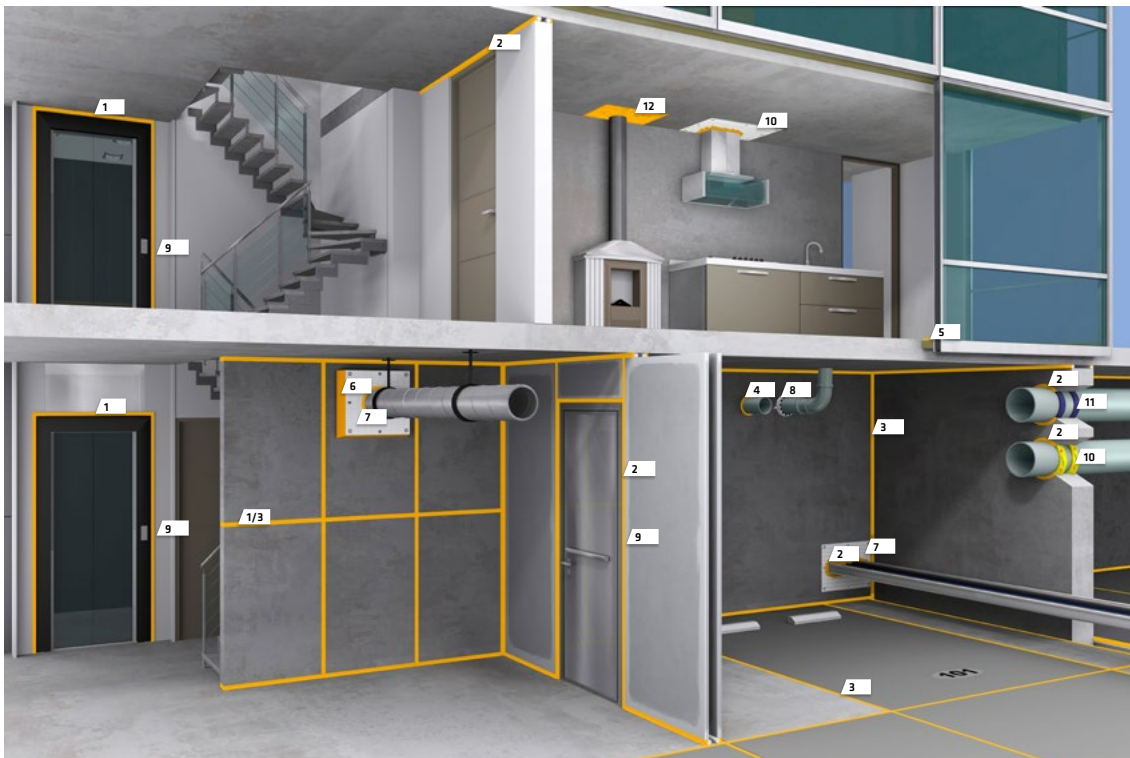
Sikasil®-670 Fire

Sika's passive fire protection solutions are designed to be able to seal all different types of building joints and penetrations, in order to help keep fire in defined compartments for a certain period of time, thereby allowing people to evacuate safely. Sika passive fire protection solutions comply with the most relevant national and international standards (including EN, UL, EAD (ETAG), ASTM, AS, Certifire), in order to

confirm that they meet the highest fire resistance requirements and consequently can help save people's lives.

For the modular builder, benefits include:

- A comprehensive range of products along with dedicated technical experts and support for your specific configurations
- We can also help guide you with any testing requirements to achieve required specifications



12
Sikacrete®-630 Fire
Fire-resistant load-bearing compound

11
SikaSeal®-629 Fire Wrap
Fire-resistant pipe wrap on a roll

10
SikaSeal®-628 Fire Wrap
Fire-resistant pipe wrap

9
Sika Boom®-420 Fire
Fire-resistant expansion foam for linear seals

8
SikaSeal®-627 Fire Collar
Fire-resistant pipe collar

7
SikaSeal®-626 Fire Board
Fire-resistant coated protection board

1
Sikasil®-670 Fire
Fire-resistant silicone sealant for linear seals in walls and floors

2
Sikacryl®-621 Fire
Fire-resistant acrylic sealant for service penetration and joint seals

3
Sika® Backer Rod Fire
Fire-resistant mineral wool-based backer rod system for linear seals

4
SikaSeal®-623 Fire
Fire-resistant intumescent sealant for penetration seals

5
Sikacryl®-624 Fire
Fire-resistant acrylic sealant/coating for floor and wall intersections

6
Sikacryl®-625 Fire
Fire-resistant ablative coating for SikaSeal®-626 Fire Board



Sika Boom®-420 Fire

Sika Boom®-420 Fire is a fire-resistant 1-part PU expansion foam for interior joints in walls.



Sikacryl®-621 Fire

Sikacryl®-621 Fire is a fire-resistant, phthalate-free acrylic sealant for interior joints and penetration sealing in walls and floors.



Sikasil®-670 Fire

Sikasil®-670 Fire is a fire-resistant, 1-component, neutral curing, low-modulus elastic silicone joint sealant.



SikaSeal®-623 Fire

SikaSeal®-623 Fire is a fire-resistant, intumescent graphite-based sealant for interior penetration seals. SikaSeal®-623 Fire is designed to provide a high volume expansion and pressure seal during a fire to combustible pipes that pass through floor and wall service openings.



SikaSeal®-626 Fireboard

SikaSeal®-626 Fire Board is a mineral wool-based protection board coated with the fire-resistant, ablative coating Sikacryl®-625 Fire on both sides. Its versatility lets it be combined with many other Sika passive fire protection products for sealing a wide range of installation service penetrations.



SikaSeal®-627 Fire Collars

SikaSeal®-627 Fire Collar is a fire-resistant prefabricated pipe collar consisting of a metal casing and an intumescent insert for interior and exterior penetration sealing applications. SikaSeal®-627 Fire Collar is designed to provide a high volume expansion and pressure seal during a fire to combustible pipes that pass through floor and wall service openings.



SikaSeal®-628 Fire Wrap

SikaSeal®-628 Fire Wrap is a fire-resistant pipe wrap consisting of one or several layers of an intumescent tape sealed in a plastic wrap. It is ready to use for interior and exterior penetration sealing applications that pass through floor and wall service openings. SikaSeal®-628 Fire Wrap is designed to provide a high volume expansion and pressure seal during a fire to combustible pipes.

INTERIOR APPLICATIONS cont'd/...

FOR FLOORING



Schönox ZM Rapid

Schönox® ZM Rapid is a rapid setting, cement-based self-levelling compound with very low emissions for almost all substrates suitable for laying. For repairing and renovation work in interior areas. Many types of covering can be laid after approximately 90 minutes. The self-levelling compound has a very low shrinkage and a good absorptivity. Extendable with sand.

For the modular builder, benefits include:

- Usability over pre-cast concrete and the ability to cure fast



Schönox iFloor

Schönox® iFloor® is a very low emission, dispersion-based rollable adhesive for laying of suitable LVT-coverings (Luxury Vinyl Tile) such as planks and tiles on levelled substrates in interior areas.

For the modular builder, benefits include:

- Fast application by roller
- Easily reworked onsite



Sikagard® Hygienic Wall Coatings

Sikagard® Hygienic Wall Coatings are a 1-component, waterborne modified acrylic resin-based coating, containing an antimicrobial additive. The reinforced and unreinforced coating systems have the ideal characteristics and performance properties for internal hygienic walls and ceilings, plus they are also easy to apply by brush, roller or airless spray and adhere to most common wall building substrates.

For the modular builder, benefits include:

- The ability to apply wholly in the factory, or part offsite/onsite
- Spray application is possible, speeding up the installation time
- Flexible, hard wearing and seamless – no joint for harbouring bacteria
- Any substrate (even tiles)
- Durable – tougher than conventional paints
- Reinforced systems provide for high chemical resistance – where continual scrubbing is required
- ETAG 022 approved systems

The products listed on pages 14-18 for interior applications are a selection of the wider range that we offer, totalling approximately 4,000 different products and solutions in the UK.

INDUSTRIAL KNOW-HOW

Look how we are adding value in other manufacturing industries

BUS DESIGN:
**80KG WEIGHT
REDUCTION**

WITH Sikaflex® LOW DENSITY
ADHESIVES AND SEALANTS



HOME APPLIANCES:
**50% MATERIAL
SAVINGS**

WITH SikaMelt® PRODUCTS



TRUCK CABINS:
**25% NOISE
REDUCTION**

WITH SikaBaffle®
AND SikaDamp®
ACOUSTIC
SYSTEMS



SANDWICH PANEL PRODUCTION:
30% FASTER WITH
SikaForce® 3-COMPONENT
SYSTEMS



IN SITU REPAIR OF WIND
TURBINE BLADES:
1 HOUR WITH
SikaForce® AND Sikadur®
REPAIR SYSTEMS



FRAME SIZE REDUCTION:
30% SMALLER WITH
STRUCTURAL Sikasil® GLAZING
ADHESIVES



MARINE:
**60%
APPLICATION
TIME
SAVINGS** WITH

Sikafloor® Marine
UNDERLAYMENT
SYSTEMS



AUTOMOTIVE:
450K TONS
OF STEEL CAN
BE SAVED EACH
YEAR BY USING
SIKA TECHNOLOGY
WITH EXISTING
PROCESSES

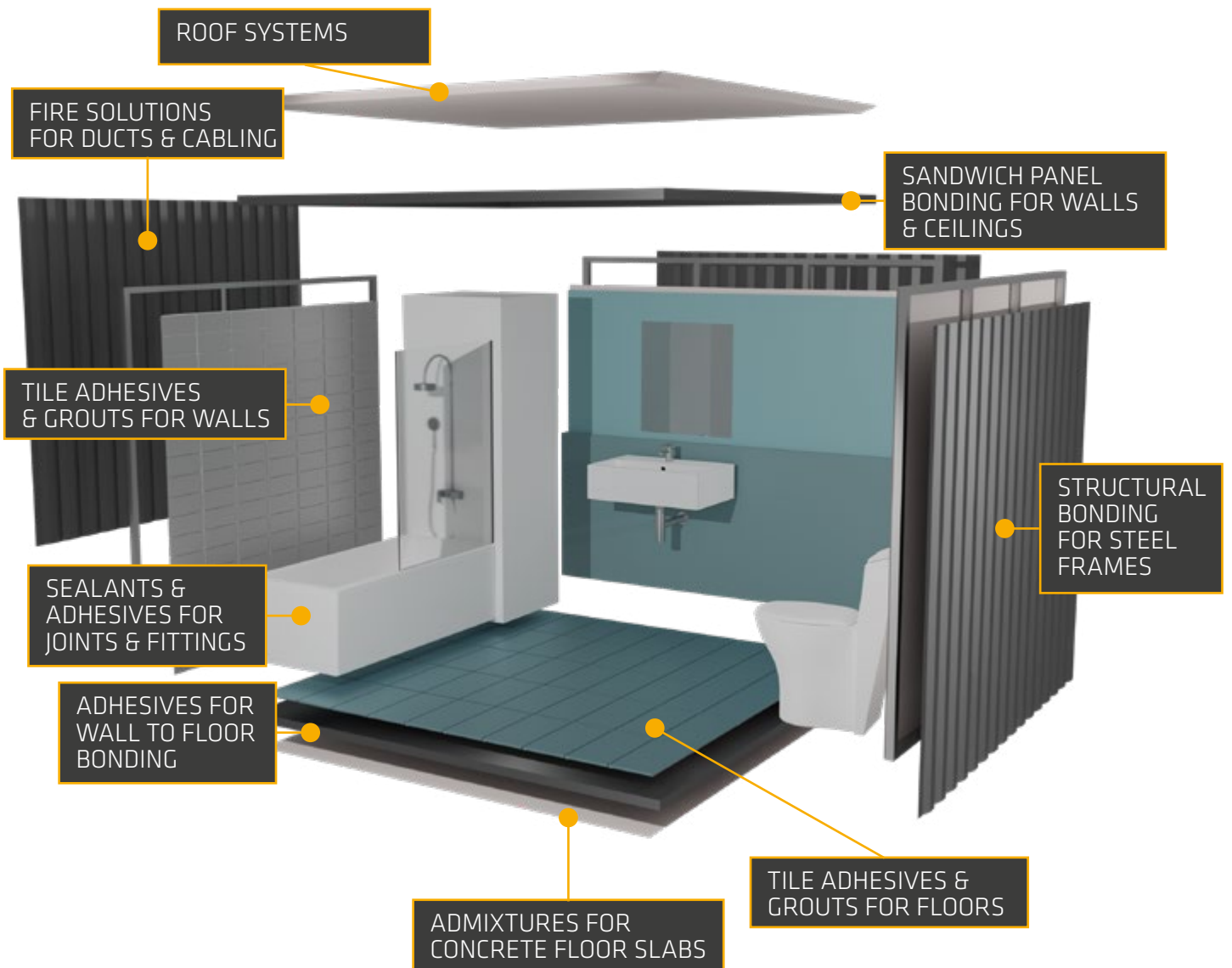


MARINE VESSELS:
**UP TO 60DB NOISE
REDUCTION** WITH Sikafloor®
Marine FLOATING FLOOR SYSTEMS



WET ROOM SYSTEMS

For the bathroom pod manufacturer

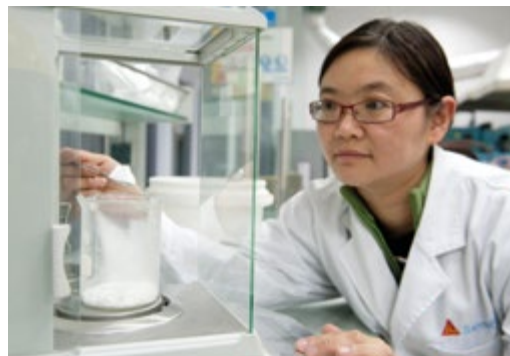


YOUR INNOVATION PARTNER

Bespoke solutions for your application needs

WITH SIKA'S UK R&D ACTIVITIES SPANNING THE FIELDS OF CONCRETE ADDITIVES, CEMENTITIOUS MORTARS, SEALANTS, ADHESIVES AND CONSTRUCTION COATINGS DEVELOPMENT, WE BELIEVE THE BUSINESS IS WELL POSITIONED TO SUPPORT INNOVATIONS IN OFFSITE AND MODULAR CONSTRUCTION.

As an innovation partner, we can bring global expertise that enables manufacturers to achieve faster production, greater resilience, weight reduction, lowered carbon footprints, and enhanced durability that leads to longer life spans.



DEDICATED TECHNICAL SUPPORT

MMC Division - assisting you all the way

SIKA HAS AN EXPERIENCED MMC TEAM, OFFERING A CUSTOMISED SERVICE FOR OFFSITE MANUFACTURERS WHERE CONSTRUCTION SOLUTIONS NEED AN INDUSTRIAL APPROACH.

Experts from key areas of our business will collaborate to help you drive value and efficiency throughout your manufacturing processes, with our extensive range of solutions optimised for your production line.

Sika offers the industry's widest product ranges for waterproofing, roofing, flooring, concrete, sealing, bonding, fire protection, and protective coatings. Whether you are creating modules for commercial, retail, education, healthcare, or residential sectors, you can be sure that Sika has the best solution for your needs.



Sika is a member of the Offsite Alliance. The Offsite Alliance works alongside leading organisations, industry bodies, Government, Local Authorities, Housing Associations and all its members to increase the uptake and delivery of offsite technologies in the residential sector.



WE HAVE SPECIALISTS IN R&D, AND A POWERFUL TECHNICAL DEPARTMENT, WHO DEVELOP SOLUTIONS FOR THE FUTURE. WE ARE FULLY EQUIPPED TO ASSIST YOU IN IMPROVING YOUR PRODUCT QUALITY AND MANUFACTURING PROCESSES.

MARKET FIELD ENGINEERING

- We provide onsite support and on-the-job training
- We support engineering, application methods, observe customer needs and initialise new innovations

PRODUCT AND TECHNOLOGY ENGINEERING

- We conduct extensive testing and investigations to ensure high quality of the products during the entire product life cycle

SYSTEM ENGINEERING

- Our expert application know-how fully exploits the potential of Sika products throughout your manufacturing process



WE HAVE A DEDICATED TEAM TO MMC.

We have a range of construction solutions in sealing and bonding, roofing, building finishing, passive fire protection, waterproofing, damping and reinforcing, concrete, flooring and wall finishes to help you:

- Speed up application times
- Make application much easier
- Take more processes offsite
- Easily repair accidental damage
- Improve airtightness
- Improve aesthetics
- Improve fire performance



SIKA FULL RANGE SOLUTIONS FOR CONSTRUCTION:



LIQUID APPLIED ROOFING



SINGLE PLY ROOFING



BITUMINOUS ROOFING



CONCRETE



CONCRETE REPAIR



STRUCTURAL STRENGTHENING



BUILDING FINISHING



WATERPROOFING



JOINT SEALING



FACADE STRUCTURAL ADHESIVES



FLOORING



INDUSTRY



DISTRIBUTION



MODULAR/OFFSITE

WHO WE ARE

Sika Limited and Sika Ireland Limited are part of the global Sika Group, specialising in the manufacture and supply of chemical based products. Sika has a leading position in the development and production of systems and products for bonding, sealing, damping, reinforcing, and protecting in the building sector and the motor vehicle industry. Sika has subsidiaries in 100 countries around the world and manufactures in over 300 factories. With more than 25,000 employees Sika generates annual sales of CHF 7.9 billion (£6.14 bn). We are also committed to providing quality, service, safety and environmental care.

In the UK and Ireland, we provide market-leading solutions for concrete, waterproofing, roofing, flooring, refurbishment, sealing & bonding, and industry, and have manufacturing sites in Welwyn Garden City, Preston, Leeds, Wishaw and Dublin with more than 920 employees and a turnover of more than £290 million.

The information, and, in particular, the recommendations relating to the application and end use of Sika® products, are given in good faith based on Sika's current knowledge and experience of the products when properly stored, handled and applied under normal conditions. In practice, the differences in materials, substrates and actual site conditions are such that no warranty in respect of merchantability or of fitness for a particular purpose, nor any liability arising out of any legal relationship whatsoever, can be inferred either from this information, or from any written recommendations, or from any other advice offered. The proprietary rights of third parties must be observed. Please refer to our homepage www.sika.co.uk for our current standard terms & conditions applicable to all orders. Users should always refer to the most recent issue of the Product Data Sheet for the product concerned, copies of which will be supplied on request.



SIKA LIMITED

Head Office
Watchmead
Welwyn Garden City
Hertfordshire, AL7 1BQ
United Kingdom

Contact

Phone +44 1 707 394444
Fax +44 1 707 329129
E-Mail enquiries@uk.sika.com
www.sika.co.uk
@SikaLimited

SIKA IRELAND LIMITED

Sika House
Ballymun Industrial Estate
Dublin 11
D11 DA2V
Ireland

Contact

Phone +353 1 862 0709
Fax +353 1 862 0707
E-Mail info@ie.sika.com
www.sika.ie
@Sikalreland

BUILDING TRUST

